

Let Youth Take Control

-International Training on Participatory Youth Work- 17 to 22 November 2019 in Naunhof near Leipzig hosted by KINDERVEREINIGUNG Leipzig e.V.

About the Training

During the training we want to discuss and find out, how participative youth work looks like in the different European countries and regional contexts. How can we strengthen or introduce participative youth work in our regions? What could we improve and how? Which structures does it need to implement participative youth projects within the given frame? As one example we will discuss our project **wir weit weg** (let's get far away).

Since 2017 KINDERVEREINIGUNG Leipzig e.V. coordinates the project **wir weit weg** in which pupils that do not strive for higher education, develop international youth exchanges supported by so called "coaches international" (young adults, mainly university students). The results and experiences were mostly positive. During these years we have been confronted with various questions and expectations from schools, social workers in the schools, apprenticing companies, partners and funding organisations that result from the participatory approaches in the field of youth work and non-formal education.

Together with eight partner organisations from different European countries who are active in the field of youth work, we want to discuss these questions and expectations as well as exchange experiences, methods and examples of good-practice within participatory youth work. Additionally we aim to strengthen the contacts with our partner organisations and develop future cooperation and projects during the training.

About the trainers

Heike Fahrn works as a facilitator in youth and adult education, primarily with diverse and international groups on topics like diversity awareness or participation and decision-making. She gives many train-the-trainer/mentor workshops and likes to empower people to develop their own projects – as facilitator and author (i.e. <https://theodor-heuss-kolleg.de/publication/initiative-cookbook/>). Apart from that, she also works as a city guide, language teacher and in proofreading and editing.

Christian Schmidt-Rost is the project coordinator for international youth work at the KINDERVEREINIGUNG Leipzig e.V. He has been active in international youth exchange work as facilitator, organiser and trainer since 1999.

About KINDERVEREINIGUNG Leipzig e.V.

In the spirit of the UN convention on the rights of the child, the KINDERVEREINIGUNG Leipzig e.V. (Children's Association Leipzig) is active in the fields of childcare, youth social work, and nonformal-education. Organised as "registered non-profit-association" (e.V.) it runs several kindergartens and open youth clubs. It coordinates the social work at a dozen secondary schools in and around Leipzig as well as two youth art centres. Furthermore, the KINDERVEREINIGUNG Leipzig e.V. organises international youth exchanges. In total, the Association employs 250 professionals and up to 100 volunteers support its work every year. The project international youth work is a small project of KINDERVEREINIGUNG Leipzig that consists of a small team of three part time employees who are supported by a team of volunteers, an EVS-Volunteer and sometimes freelancers.



About the participants

Ideally, the participants will be mainly youth workers, coordinators and facilitators who work in the field of (participatory) youth work and are interested in implementing participatory youth projects in their organisations.

The application process is handled by our partner organisations in the respective countries.

Our partner organisations are:

- Centrum Młodzieży im. dr. H. Jordana, Poland
- Malta UNESCO Youth Association, Malta
- Associação Spin para o Intercâmbio, Formação e Cooperação entre os Povos, Portugal
- VIRTAIN KAUPUNKI, Finland
- SCHEDIA STIN POLI KALLITEXNIKI PAIDAGOGIKI OMADA, Greece
- Consejo de la Juventud Comarcal de Calahorra, Spain
- FUNDACJA CENTRUM EDUKACJI OBYWATELSKIEJ, Poland
- CEMEA, France

Practical arrangements

Venue

During the whole time we will be accommodated at

Haus Grillensee
Ammelshainer Straße 1
04683 Naunhof (near Leipzig)
<https://www.grillensee.de/>

Note: Bed linen and towels will be provided without additional costs for the participants.
The accommodation will be in 2-bed rooms.

Food

Breakfast, lunch and dinner will be provided by the host organisation at the venue. Dietary needs will be respected, please inform us beforehand so that we can try to find solutions with the kitchen team.

Dates

17 to 22 November 2019

Arrival day is the 17th November 2019, after 17:00.

There will be a dinner at 18:30 and afterwards a small “Get to know each other” informal session.

Please inform us, if you plan to arrive later due to travel connections.

Departure day is the 22nd November after lunch, which will be served at 12:30.

Weather

In Germany November is often very foggy and rainy and contains not many hours of sun. The temperature lies normally between 2 °C and 7°C. We recommend to bring warm clothes and shoes which survive also rainy days.

Working Language

It is necessary that all participants have a good level of English.

Travel

The easiest way to travel will be probably to the airport in Berlin Schönefeld or Berlin Tegel or directly to Leipzig-Halle airport and from there to Naunhof.

Note: if you buy the tickets for the train from Berlin or Leipzig (doesn't matter if online or at the ticket machine) you can buy directly one ticket for the whole trip to Naunhof.

Only from Berlin Tegel airport you will need additionally a single ticket for the bus "TXL".

Train connections you can check and book here: <https://www.bahn.com/en/view/index.shtml>

From Berlin-Schönefeld airport:

Take the suburban train S 45 (direction: Berlin Südkreuz) to Berlin Südkreuz and change there to the ICE train to Leipzig Hauptbahnhof (Leipzig main station).

Change there to the local train RB 110 (direction: Grimma OR Döbeln) and get off at Naunhof.

From Berlin Tegel airport:

Take the bus "TXL" directly from Tegel airport to Berlin Hauptbahnhof (main station) and change there to the ICE train to Leipzig Hauptbahnhof (Leipzig main station).

Change there to the local train RB 110 (direction: Grimma OR Döbeln) and get off at Naunhof.

From Leipzig-Halle airport:

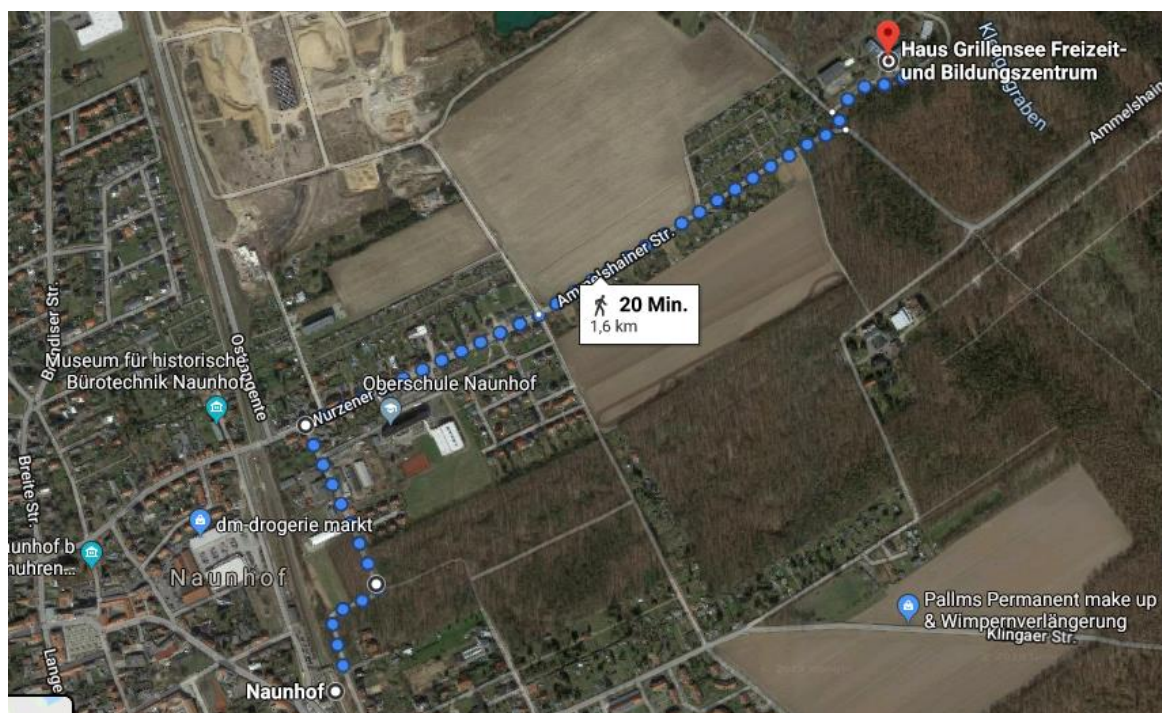
Take the suburban train S 5X or any local train to Leipzig Hauptbahnhof (Leipzig main station).

Change there to the local train RB 110 (direction: Grimma OR Döbeln) and get off at Naunhof.

Note: the last suburban train from Leipzig to Naunhof is at 00:28 (and arrives at 00:52). After that there is no train connection between Leipzig and Naunhof until the first train in the morning at 5:06.

How to get to the venue

When you are in Naunhof at the small train station, cross the train track by going up and down the bridge. Now you should be standing at Nordstraße, where you turn north and follow the road through the small forest until the name turns to Lutherstraße. Later turn to the right into Wurzener Straße which later becomes Ammelshainer Straße. Go to the end of the street until you see the youth center "Haus Grillensee" (it is next to the crossroads with Birkenweg).



Costs

Food, Lodging and educational costs are 100% covered by the Program.

Travel Costs: covered by the Program up to the limit indicated in the table for every participant from each country.

Note: All receipts must be provided, including boarding passes.

See below the distance bands and the possible travel cost reimbursements for each country:

Country of Origin	Distance Band	Travel Grant per Participant
Finland	500-1999 km	275.00 EUR
France	500-1999 km	275.00 EUR
Germany	0-9 km	0.00 EUR
Greece	500-1999 km	275.00 EUR
Malta	500-1999 km	275.00 EUR
Poland	500-1999 km	275.00 EUR
Portugal	2000-2999 km	360.00 EUR
Spain	500-1999 km	275.00 EUR

Participants can travel by: plane (economy class), bus, train (second class), public transport.

(No TAXIS!)

All costs will be refunded after the training by bank transfer. During the training course you will need to fill out a form with your data, bank account and travel costs, so please have that information with you.

Finally, please send the digital tickets/receipts/boarding passes or scans/photographs of your tickets to muehlich.a@kv-leipzig.de with the subject title "TRAVEL INFO – Name Surname, Country" before you come to the project to know your arrival/departures time.

Contact persons

Christian Schmidt-Rost

Wasserstraße 18

04177 Leipzig

Telephone +49 341 - 926 073 53

Mobile +49 157 80 60 42 44

E-mail: international@kv-leipzig.de

Anne Mühlich

E-mail: muehlich.a@kv-leipzig.de

Programme

	Sunday 17 th November	Monday 18 th November	Tuesday 19 th November	Wednesday 20 th November	Thursday 21 st November	Friday 22 nd November
		8:00 breakfast	7:00 breakfast	8:00 breakfast	8:00 breakfast	8:00 breakfast
Morning	after 17:00 Arrival	getting to know each other + introducing the idea of participative youth work	8:00 train to Leipzig attending the fifth anniversary of the “wir weit weg” project: What do/did we do?	approaches that let participation flourish + possibilities of participative youth work in your organisations/ countries	creating new participative projects together	presentation of project plans + evaluation
		12:30 lunch	lunch at the venue in Leipzig	12:30 lunch	12:30 lunch	12:30 lunch
Afternoon		What is (successful) participative international youth work? + common understanding of participation/ youthpass as tool for participative projects	workshops + project fair of partner organisations	creating new participative projects together	creating new participative projects together	departure (around 14:00)
	18:30 dinner	18:00 dinner	ca. 19:30 dinner in Leipzig	18:00 dinner	18:00 dinner	
Evening	short getting to know each other; who is already here		(free) evening in the city/coming back to Naunhof			